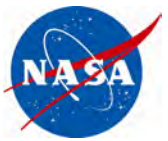
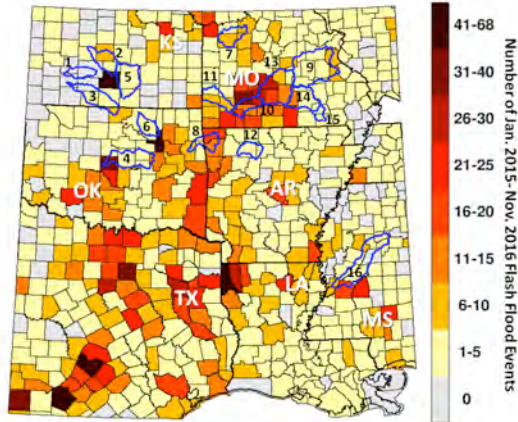




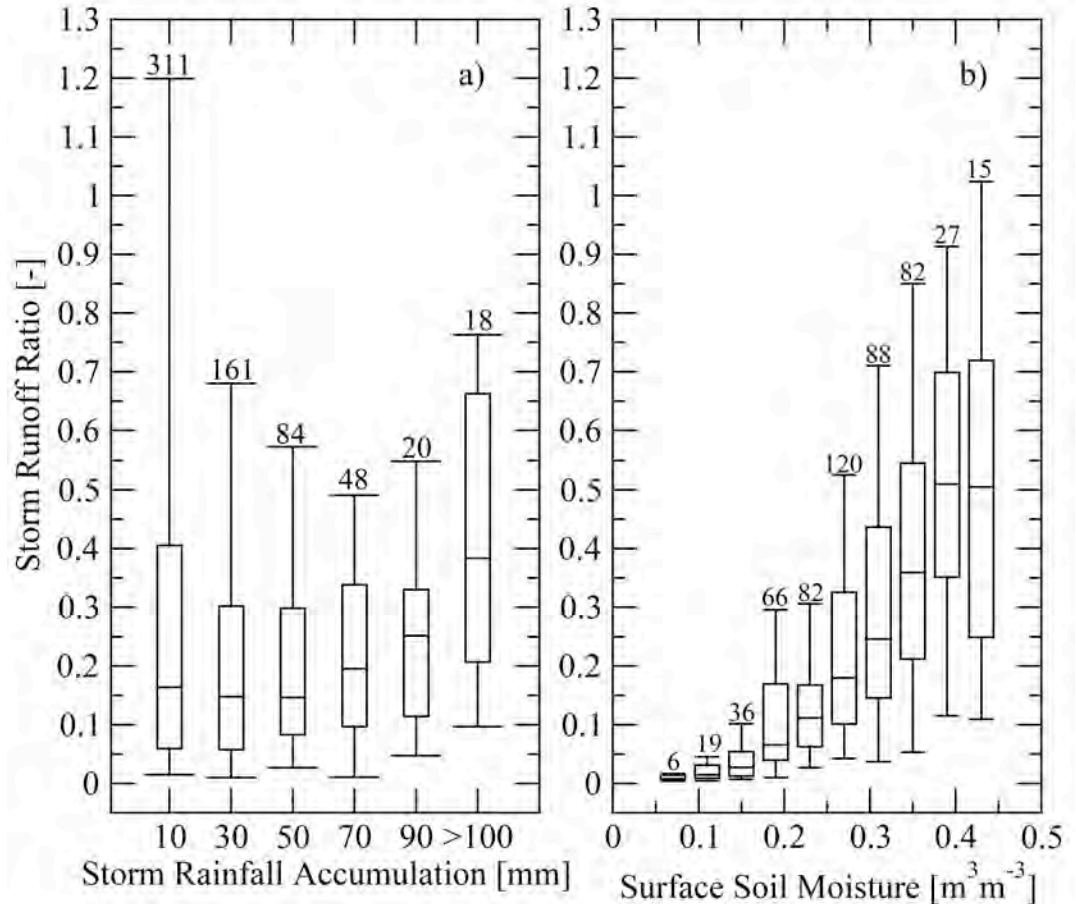
SMAP Improves the Representation of Pre-Storm Conditions for Hydrologic Forecasting



Problem: Runoff ratio not well-predicted using current approaches to rainfall-runoff transformation.



Finding: Pre-storm SMAP estimates of soil moisture are better predictors of runoff ratio than traditional storm volume-based indices.



Impact: Flood predictions can be made more accurate in the era with SMAP soil moisture and precipitation information