



Australian Network Status and Future Plans

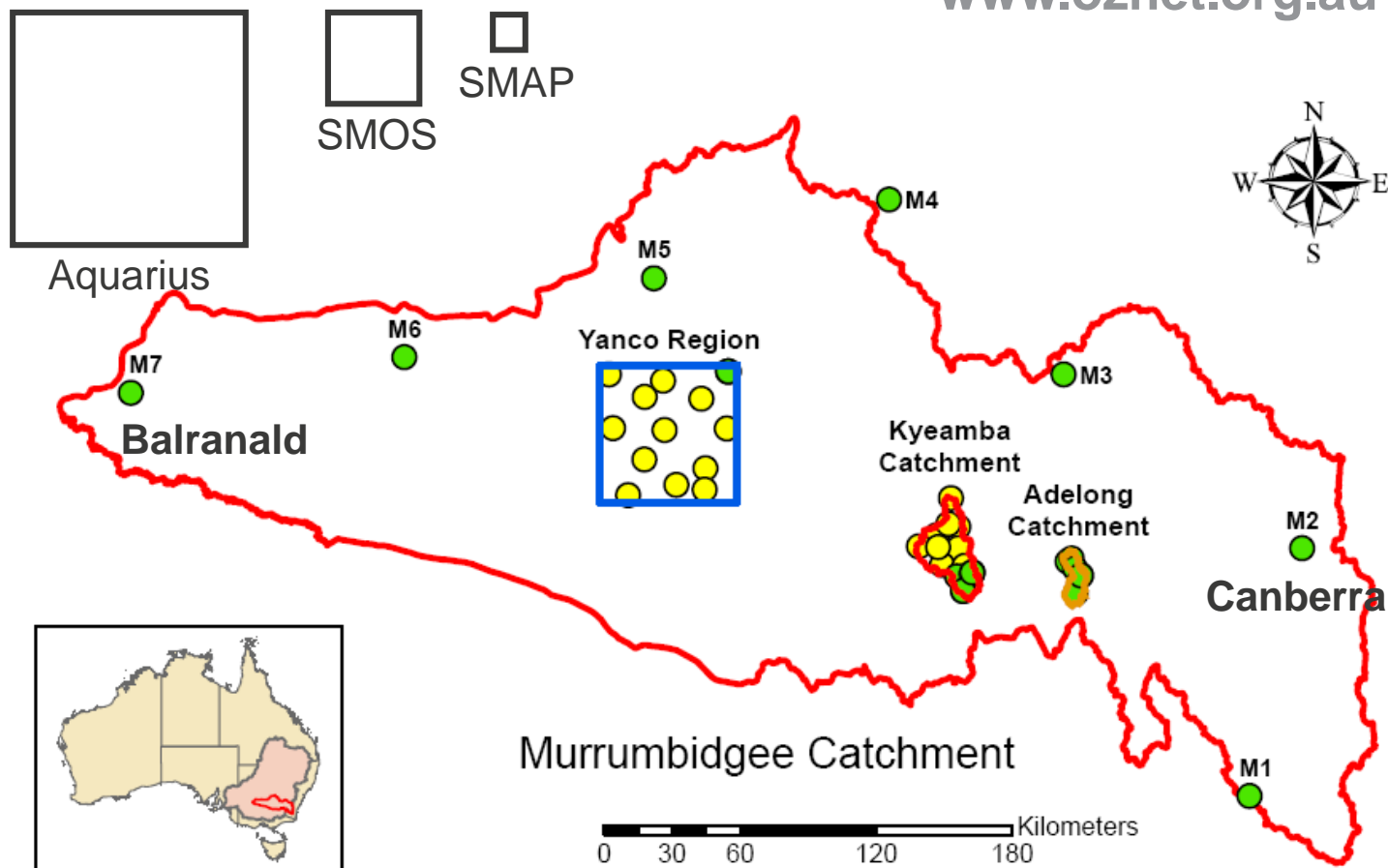
Jeffrey Walker, Xiaoling Wu, Nan Ye, Mei-Sun Yee



The OzNet observatory

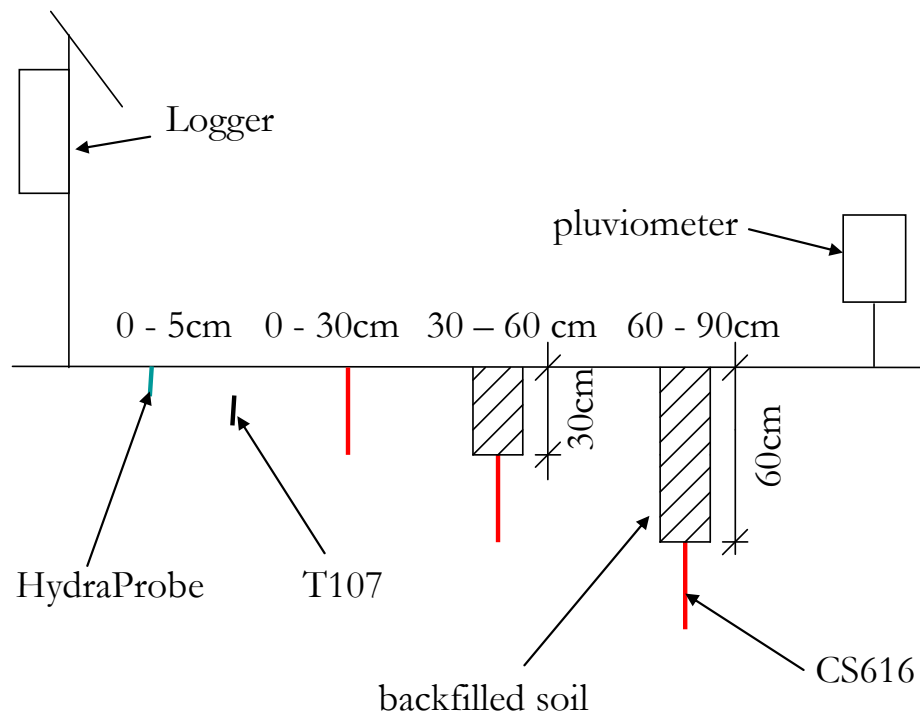
Satellite footprint sizes

www.oznet.org.au

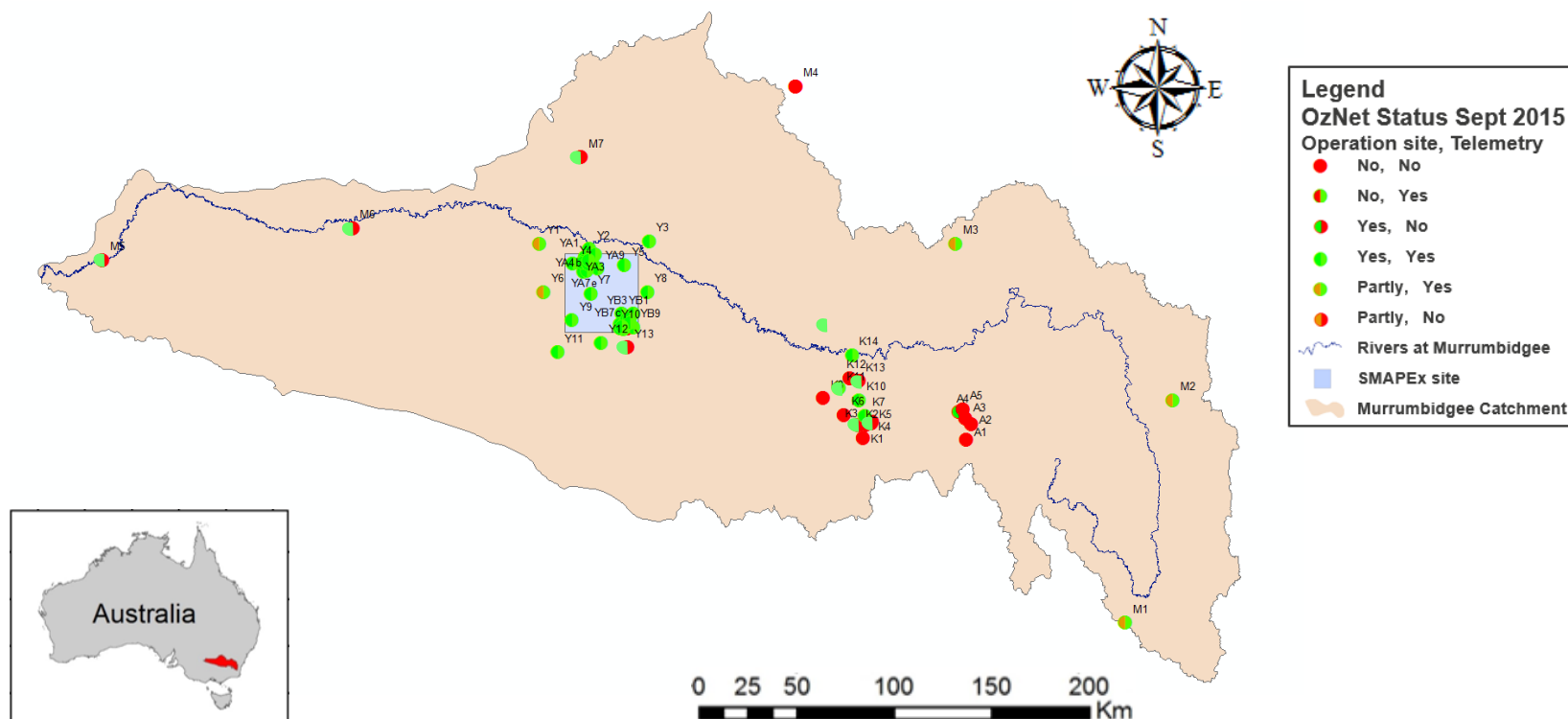


Smith, Walker, Western, Young, Ellett, Pipunic, Grayson, Siriwidena, Chiew, and Richter, 2012. The Murrumbidgee Soil Moisture Monitoring Network Data Set. *Water Resources Research*, **48**, W07701

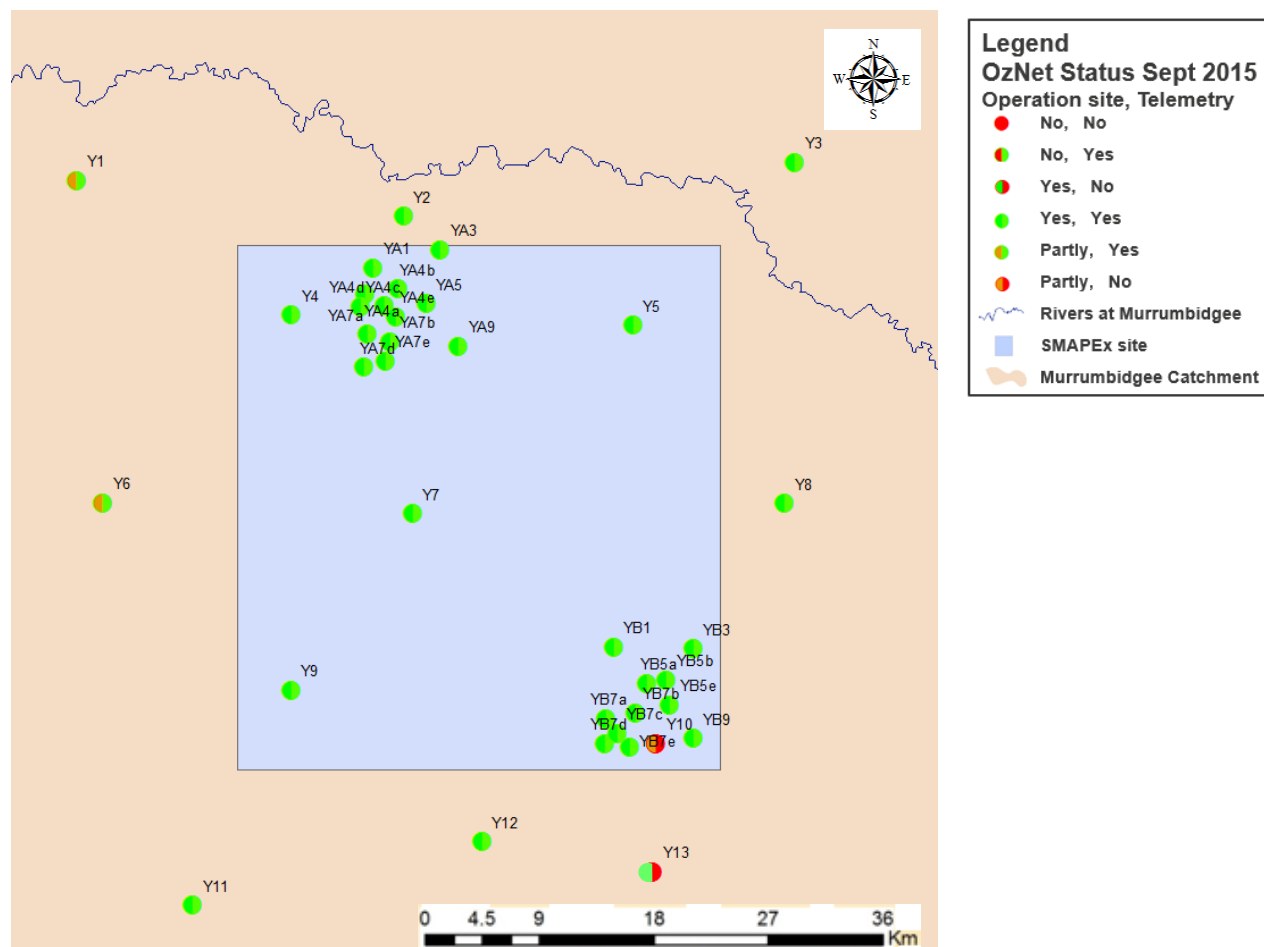
Typical monitoring site



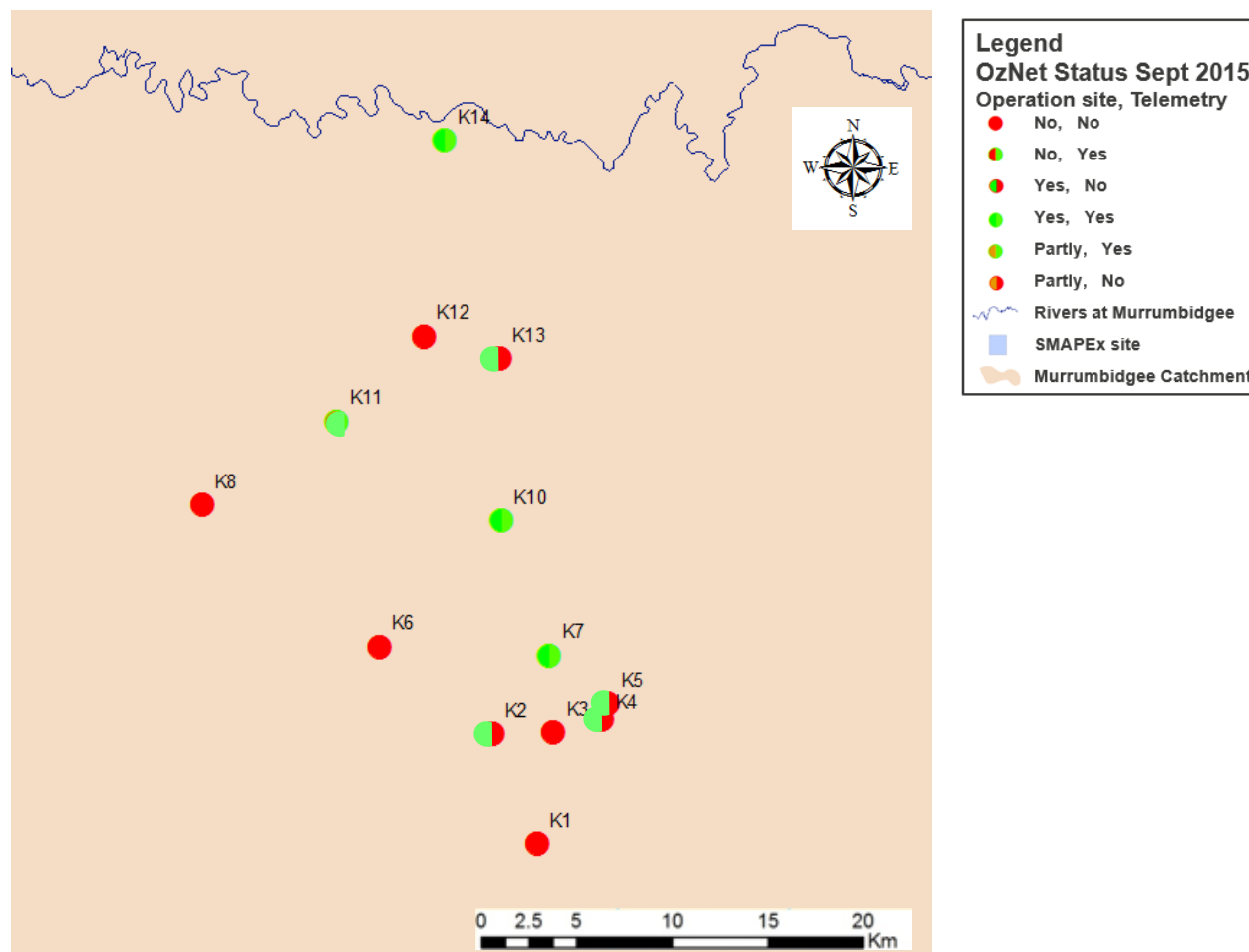
OzNet Status – Aug 2015



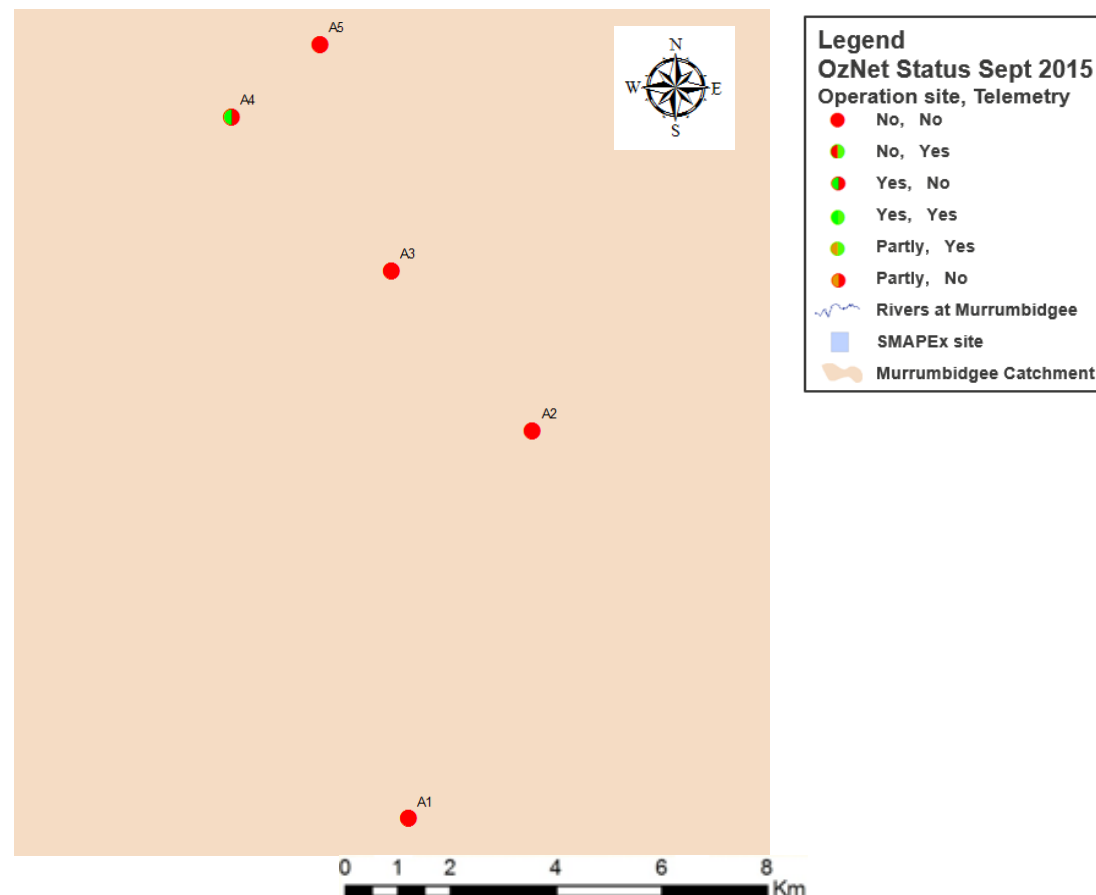
Yanco Status – Aug 2015



Kyeamba Status – Aug 2015

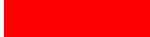




Adelong Status – Aug 2015



Data Status Since Jan 2015

	Jan-15	Feb-15	Mar-15	Apr-15	May-15	Jun-15	Jul-15	Aug-15
Y1								
Y2								
Y3								
Y4								
Y5								
Y6								
Y7								
Y8								
Y9								
Y10								
Y11								
Y12								
Y13								
YA1								
YA3								
YA4a								
YA4b								
YA4c								
YA4d								
YA4e								
YA5								
YA7a								
YA7b								
YA7d								
YA7e								
YA9								

 All data missing
 Data available
 Data incomplete or not available - Part or all of the data pending of manual download of the station

Data Status Since Jan 2015

	Jan-15	Feb-15	Mar-15	Apr-15	May-15	Jun-15	Jul-15	Aug-15
YB1								
YB3								
YB5a								
YB5b								
YB5e								
YB7a								
YB7b/YB5d								
YB7c								
YB7d								
YB7e								
YB9								
M1								
M2								
M3								
M4								
M5								
M6								
M7								



All data missing

Data available

Data incomplete or not available - Part or all of the data pending of manual download of the station

Data Status Since Jan 2015

	Jan-15	Feb-15	Mar-15	Apr-15	May-15	Jun-15	Jul-15	Aug-15
K1								
K2								
K3								
K4								
K5								
K6								
K7								
K8								
K10								
K11								
K12								
K13								
K14								
A1								
A2								
A3								
A4								
A5								

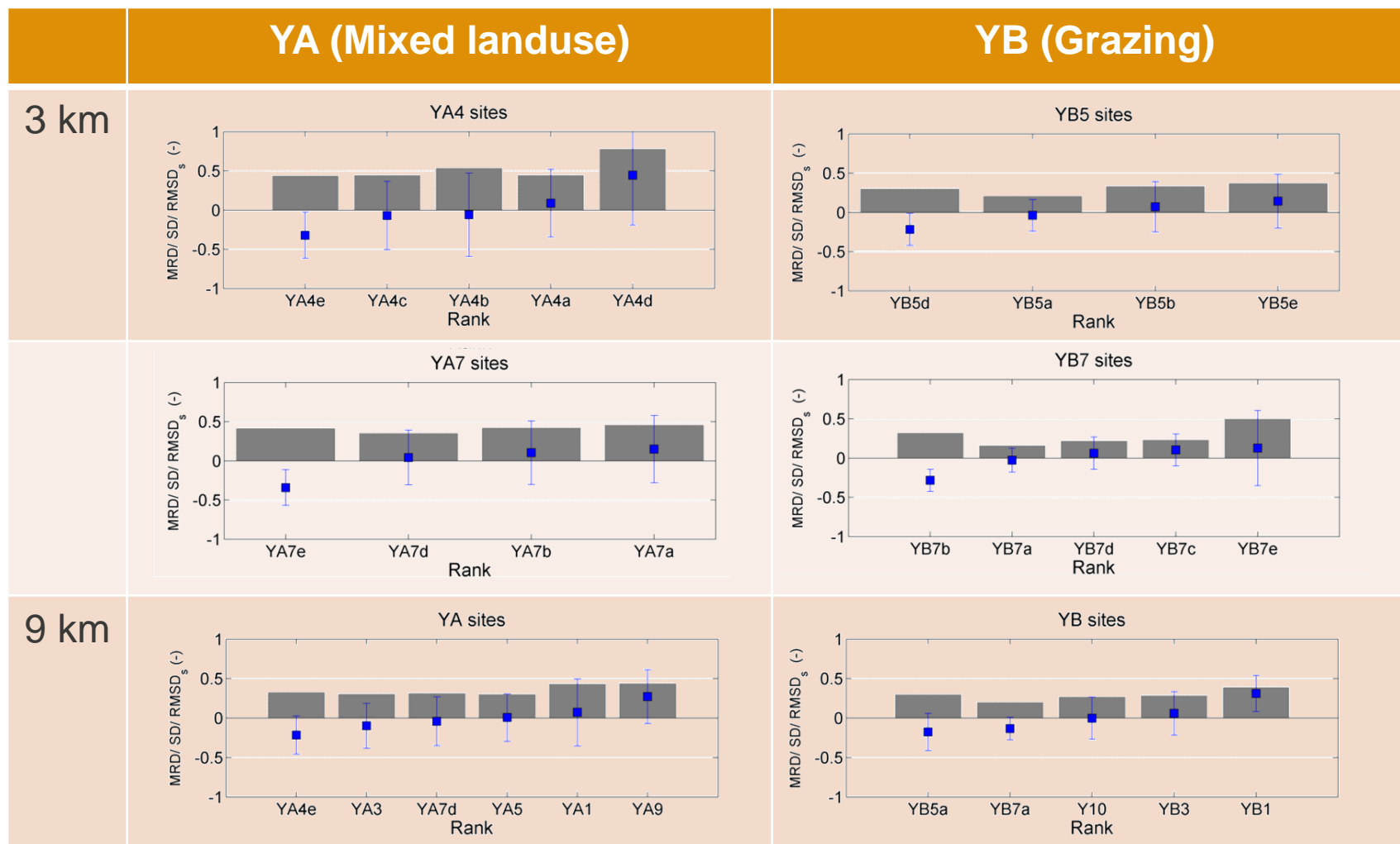


All data missing

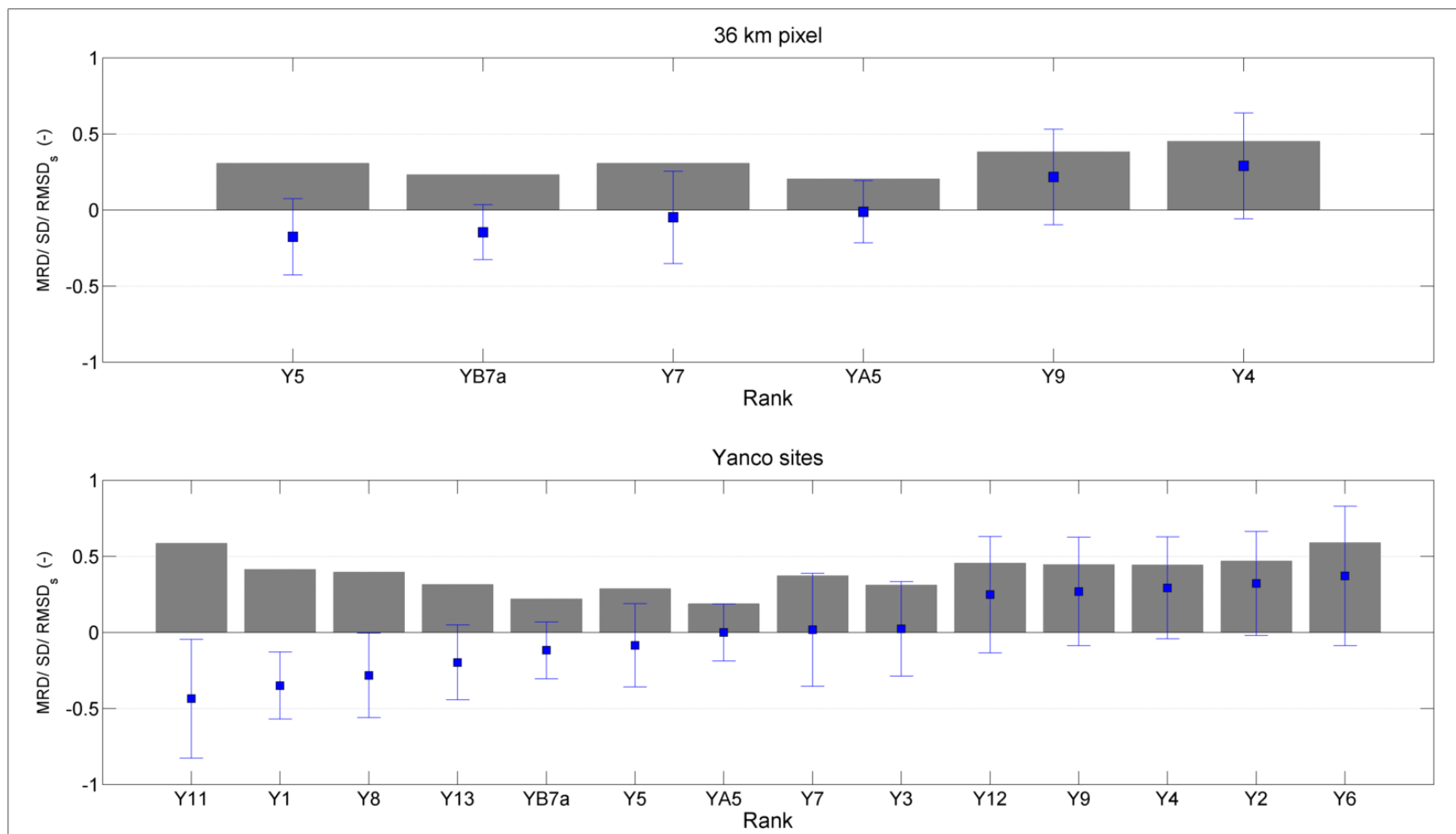
Data available

Data incomplete or not available - Part or all of the data pending of manual download of the station

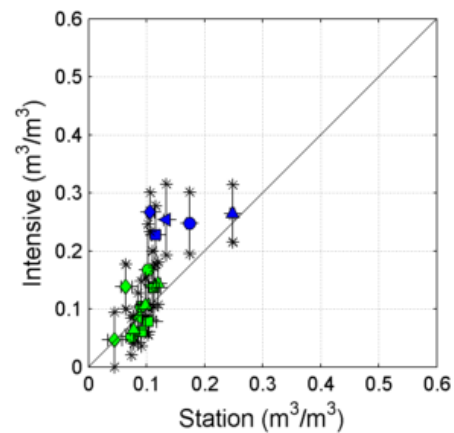
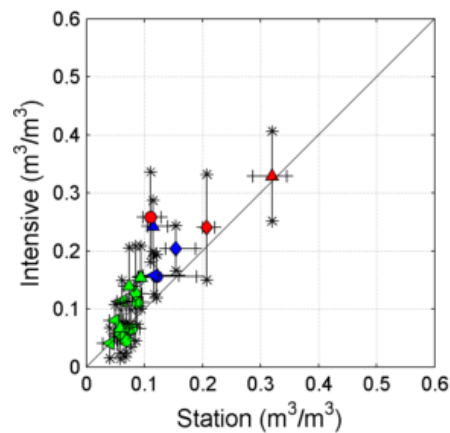
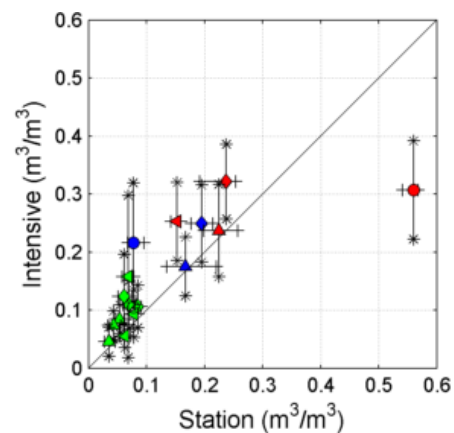
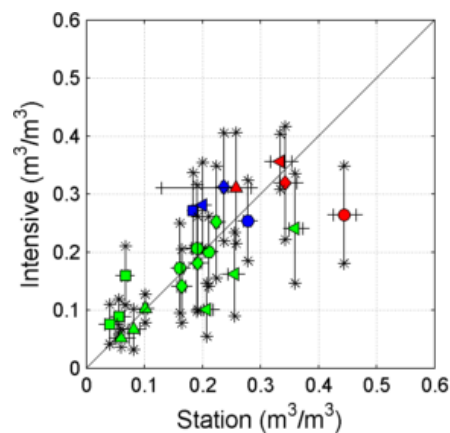
Regional scale



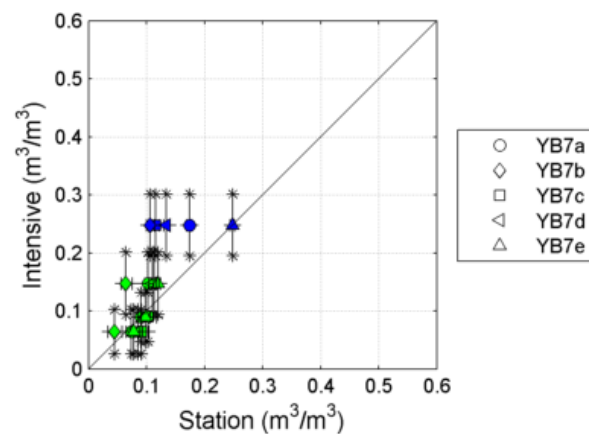
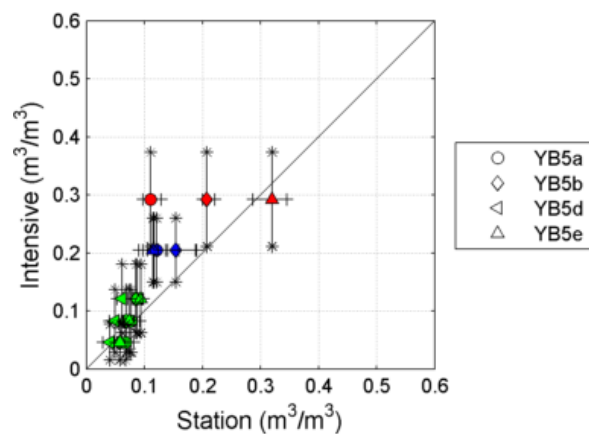
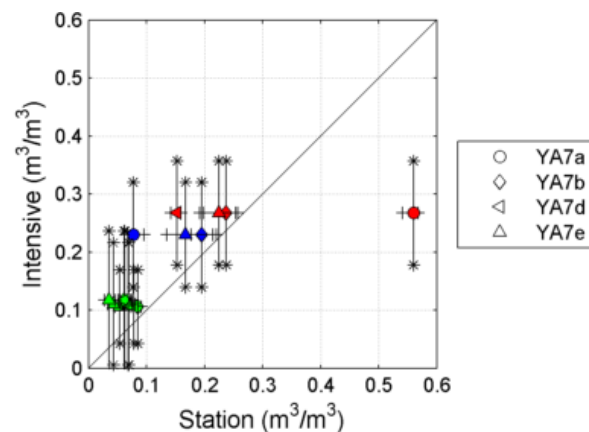
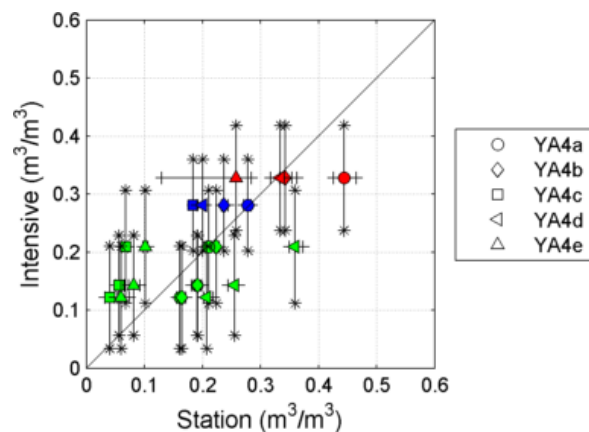
Regional scale



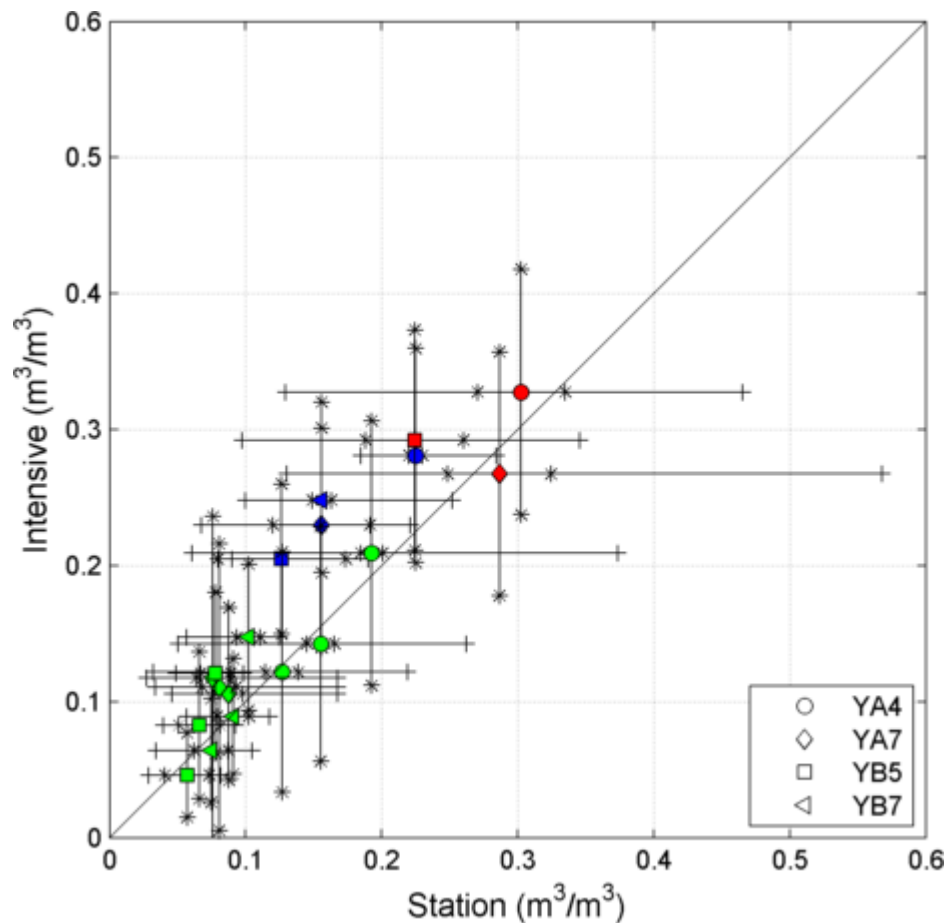
Point to pixel (1 km)



Point to pixel (3 km)



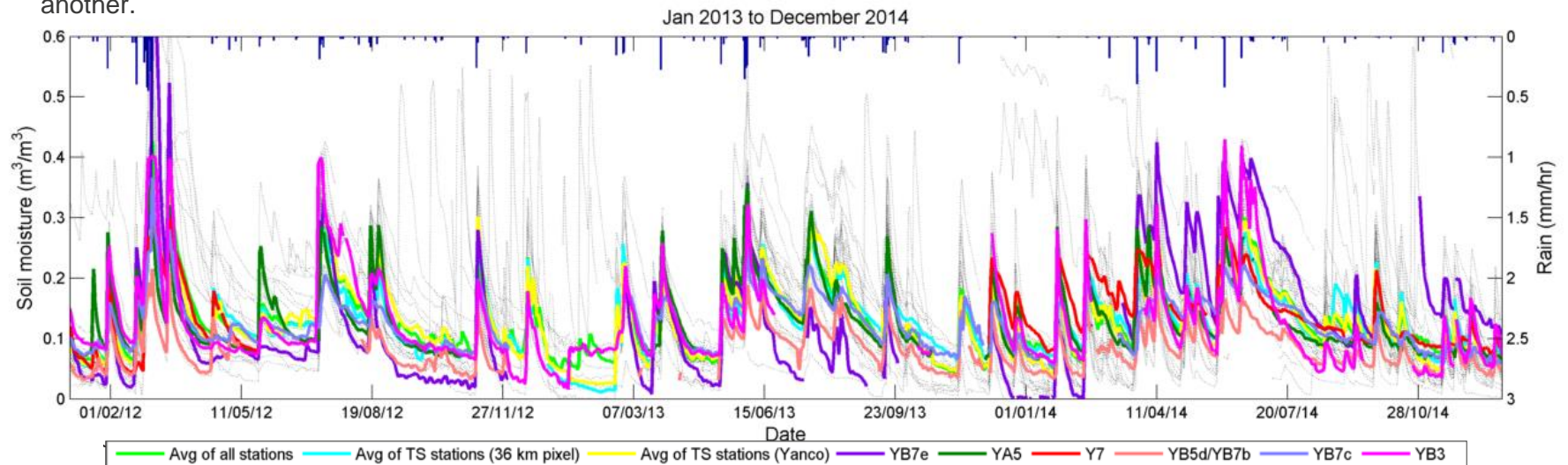
Average of all stations to pixel



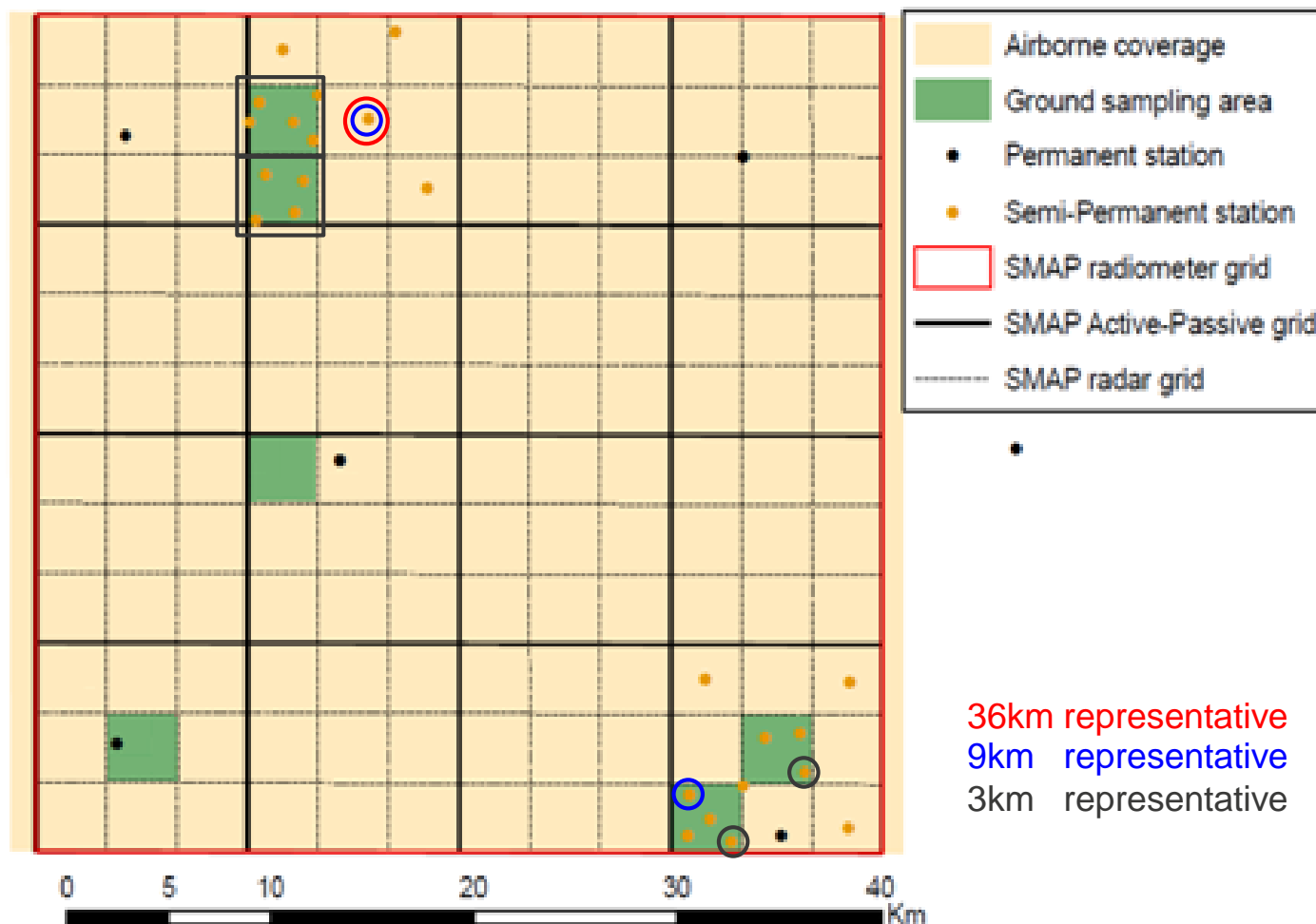
Summary of analysis

Pixel	Focus Area	TS (MRD)	TS (SDMRD)	TS (RMSE)	Point to pixel	Recommendations
3 km	YA4	YA4b	YA4c	YA4e	YA4b	Weighting
	YA7	YA7d	YA7e	YA7d	YA7b	Weighting
	YB5	YB5a	YB5a	YB5a	YB5e	YB5e
	YB7	YB7a	YB7b	YB7a	YB7e	YB7e
9 km	YA	YA1 (YA1)	YA7e (YA7e)	YA5 (YA5)	-	YA5
	YB	Y10 (YB7d)	YB7b (YB7a)	YB7a (YB7c)	-	YB7a
36 km	Y	Y7 (YA4c)	YB5d/YB7b (YB5d/YB7b)	YA5 (YB7c)	YB7e, YA5	YA5

Stations in brackets are representative stations when analysis was carried out without eliminating stations from one pixel scale to another.



Representative stations



Plans for next 3, 5, ...yrs

- We have (limited) funding until end of 2016
 - Half a person
 - \$15k /yr for travel costs AND hardware replacements
- Yanco site will continue to be the priority
 - Followed by Kyeamba
 - Murrumbidgee wide
 - Adelong
- At end of 2016 we will likely have to close all stations except for Yanco