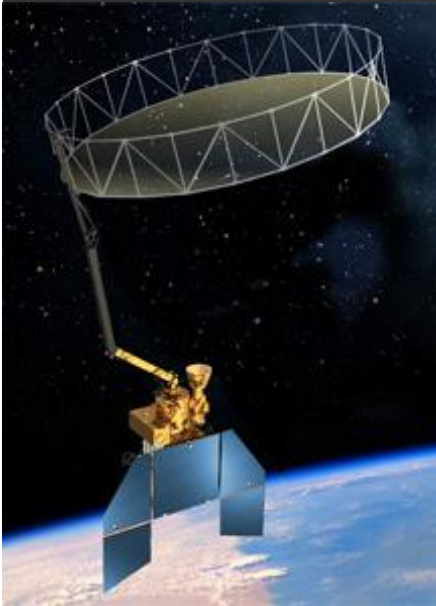




Good Practices of Soil Moisture Validation

Jeffrey Walker, Xiaoling Wu, Nan Ye, Mei-Sun Yee



OzNet

www.oznet.org.au

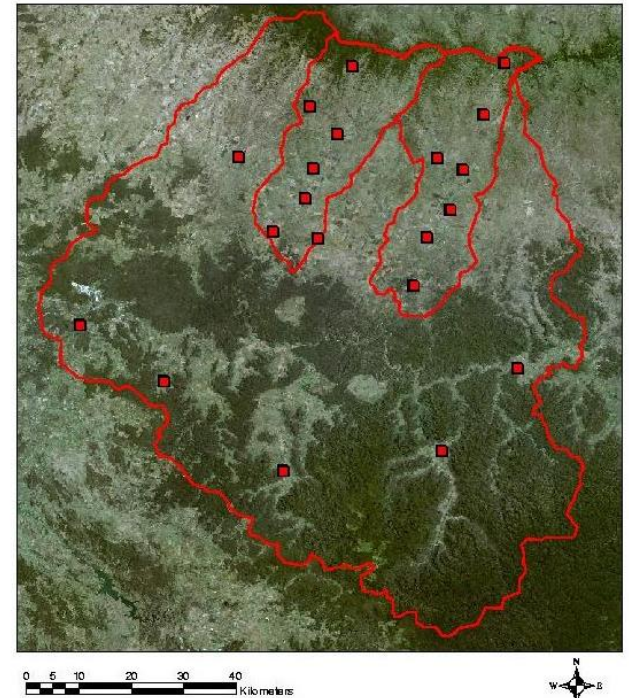
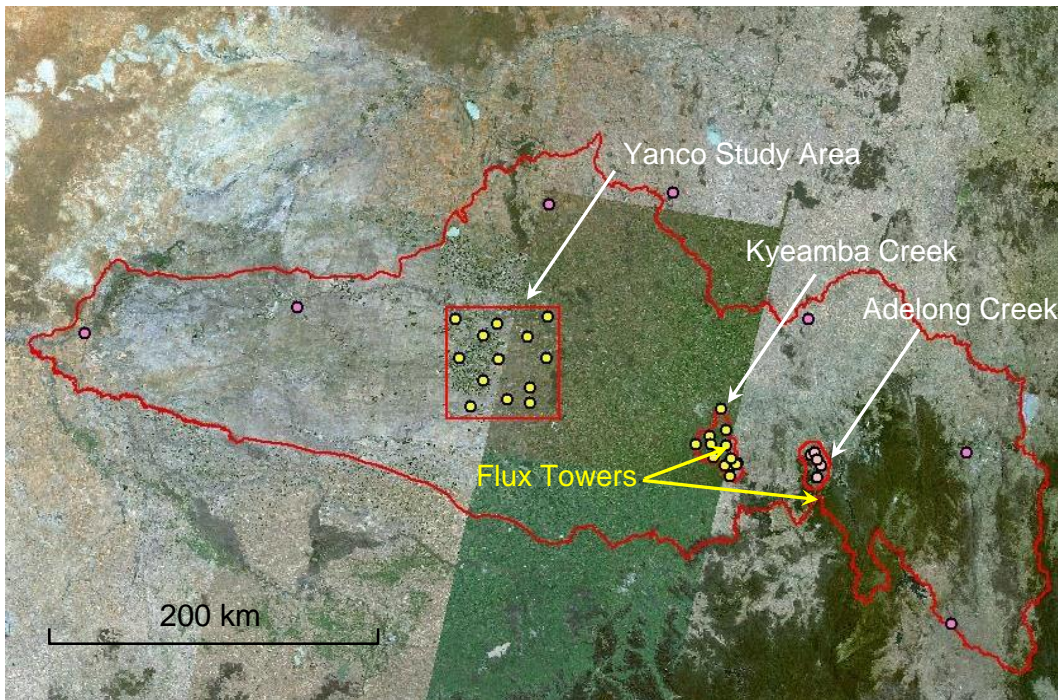
Hydrological monitoring network.
A national monitoring network for soil moisture and micrometeorology.



HOME



Godiburn



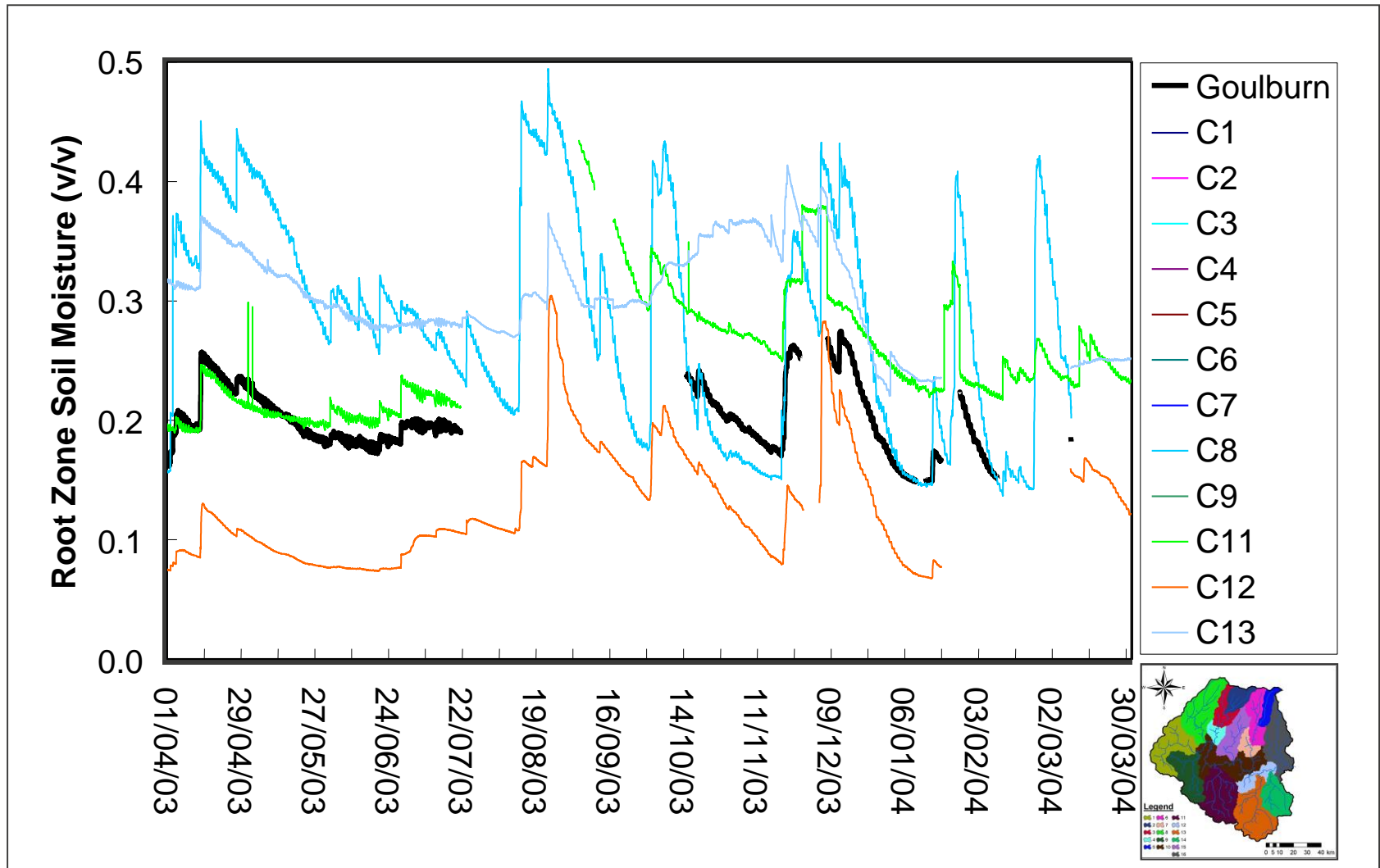
Kilometers

Click on location for a closer view.

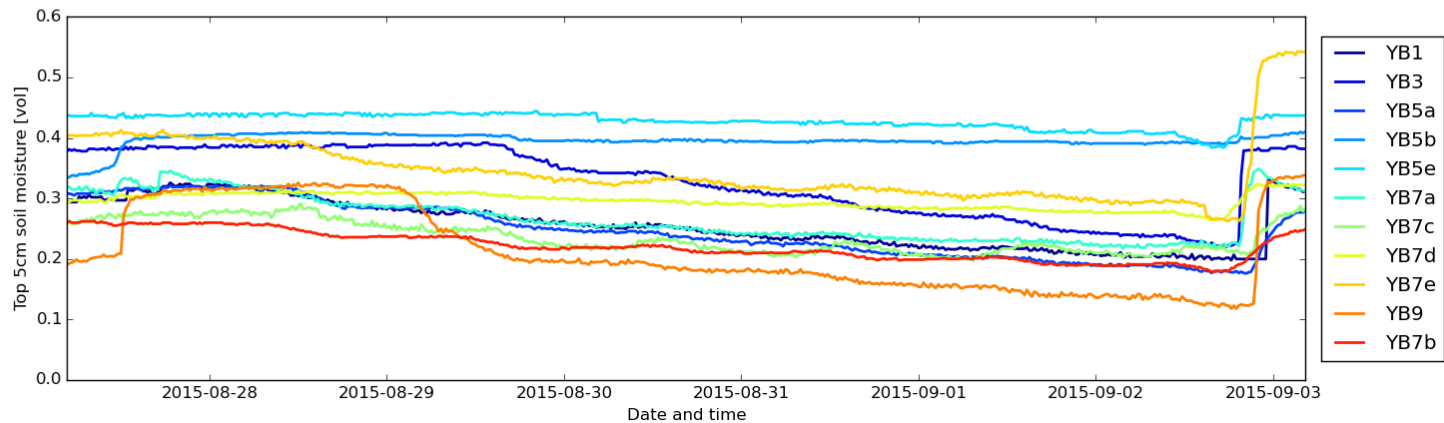
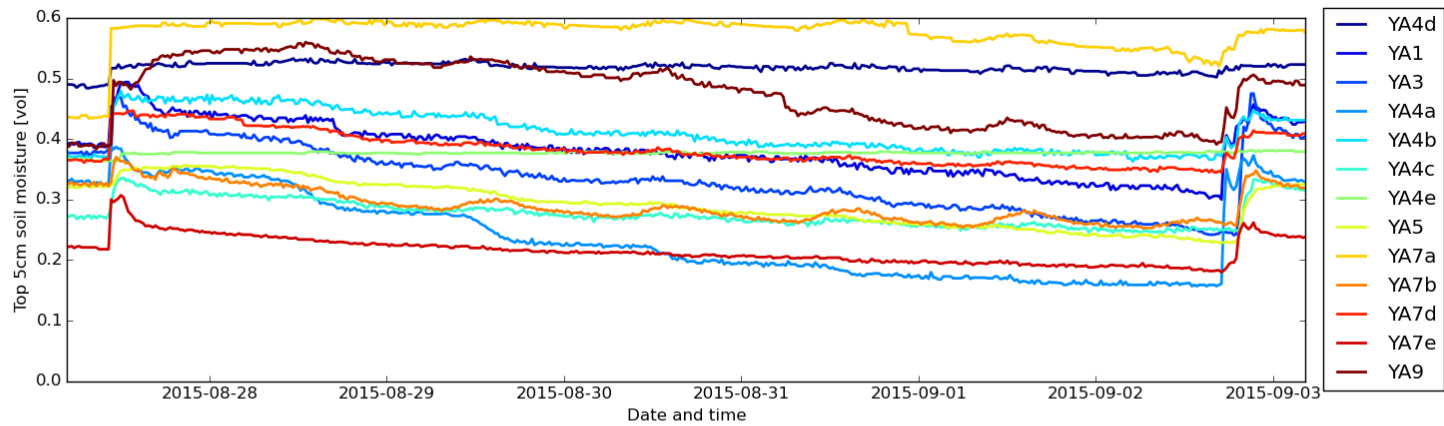
Typical monitoring site



The soil moisture conundrum

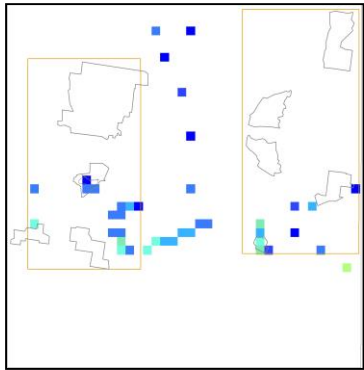


The soil moisture conundrum

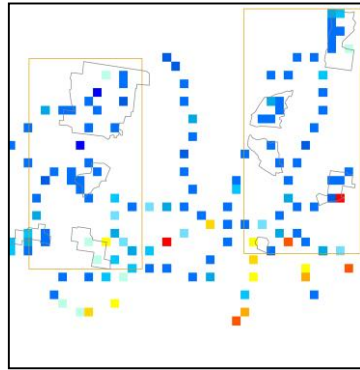


How many stations to monitor?

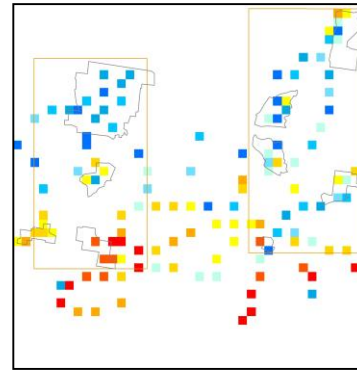
31/10/05



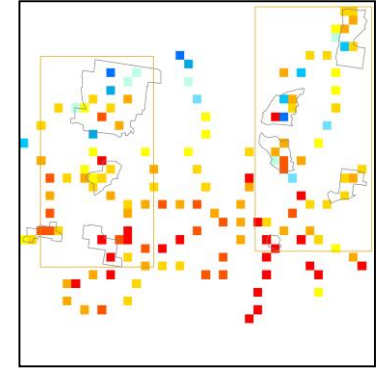
07/11/05



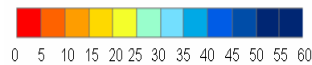
14/11/05



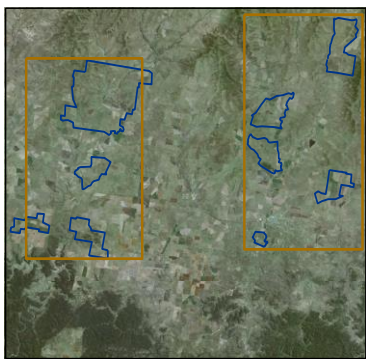
21/11/05



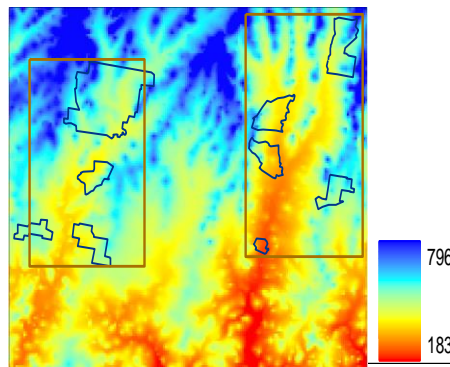
Soil Moisture (% V/V)



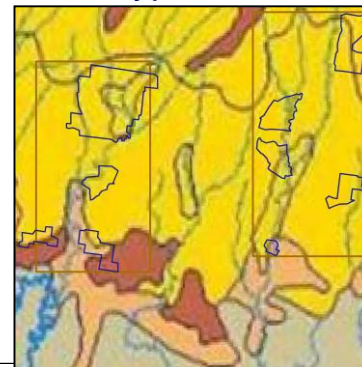
Landsat



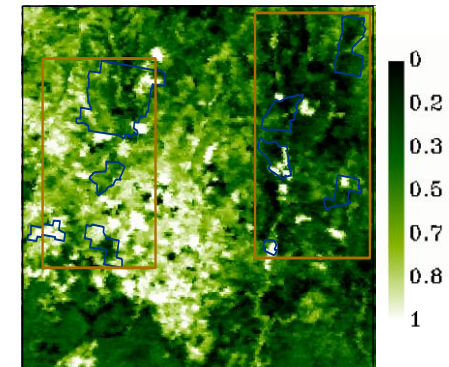
Elevation



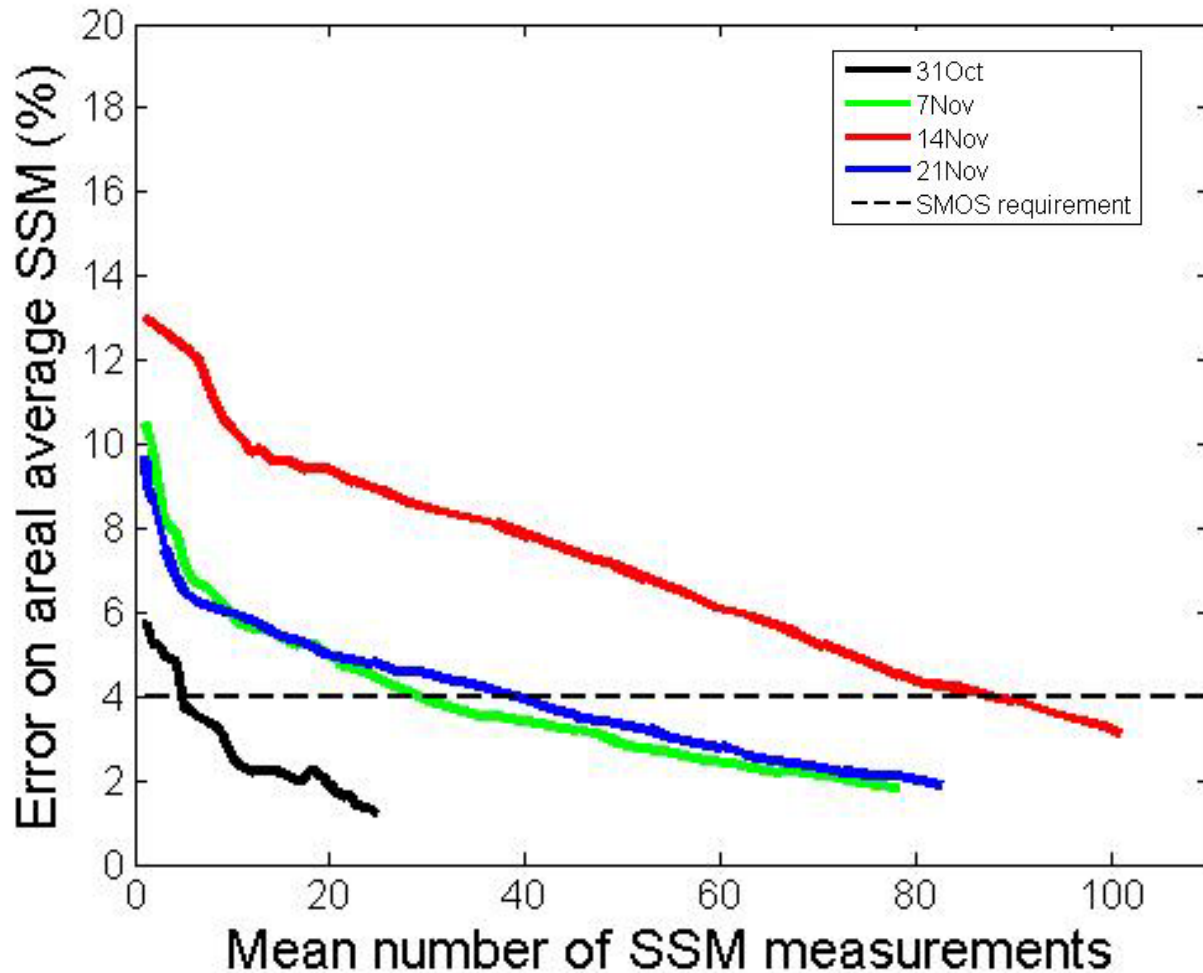
Soil type



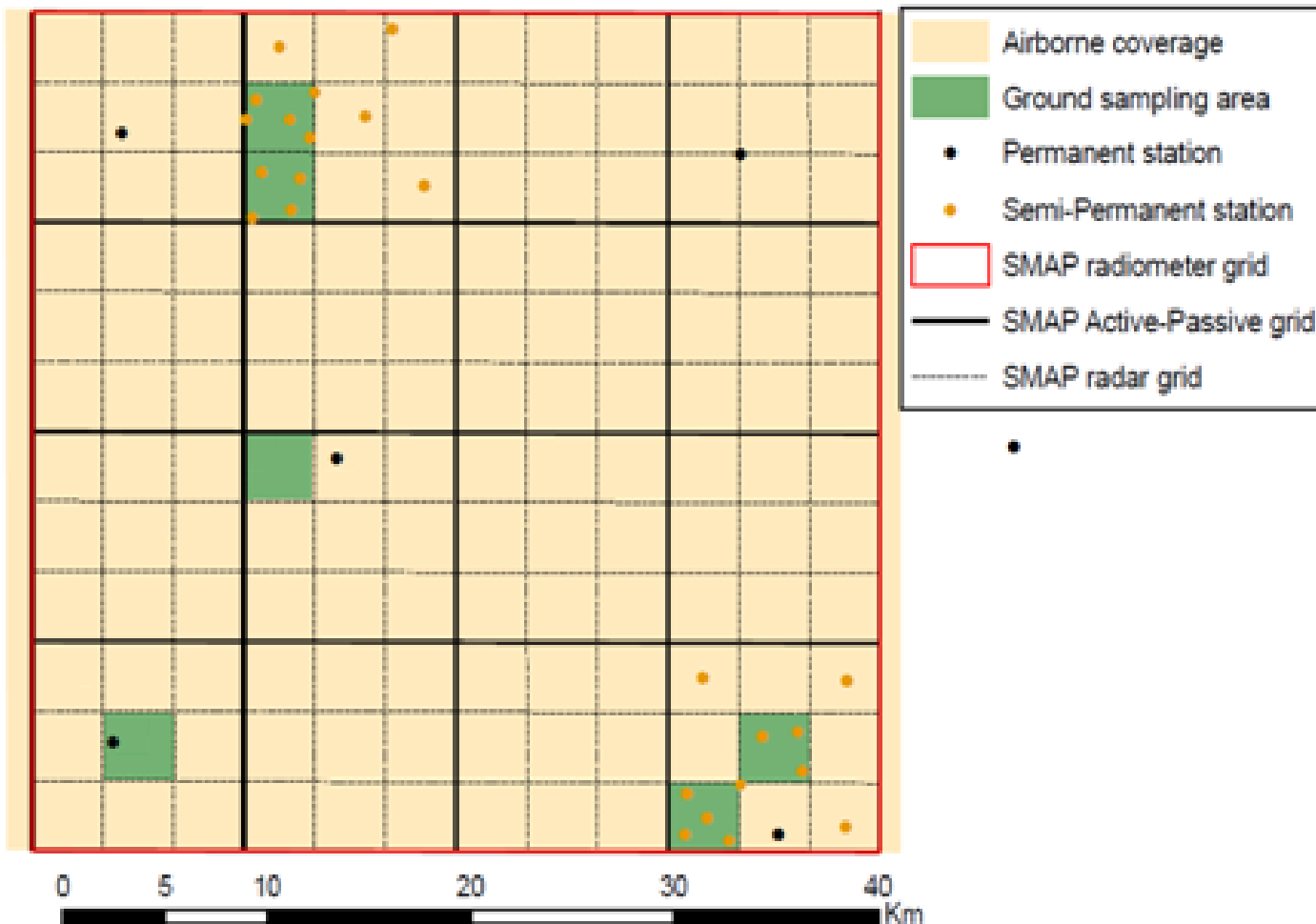
NDVI



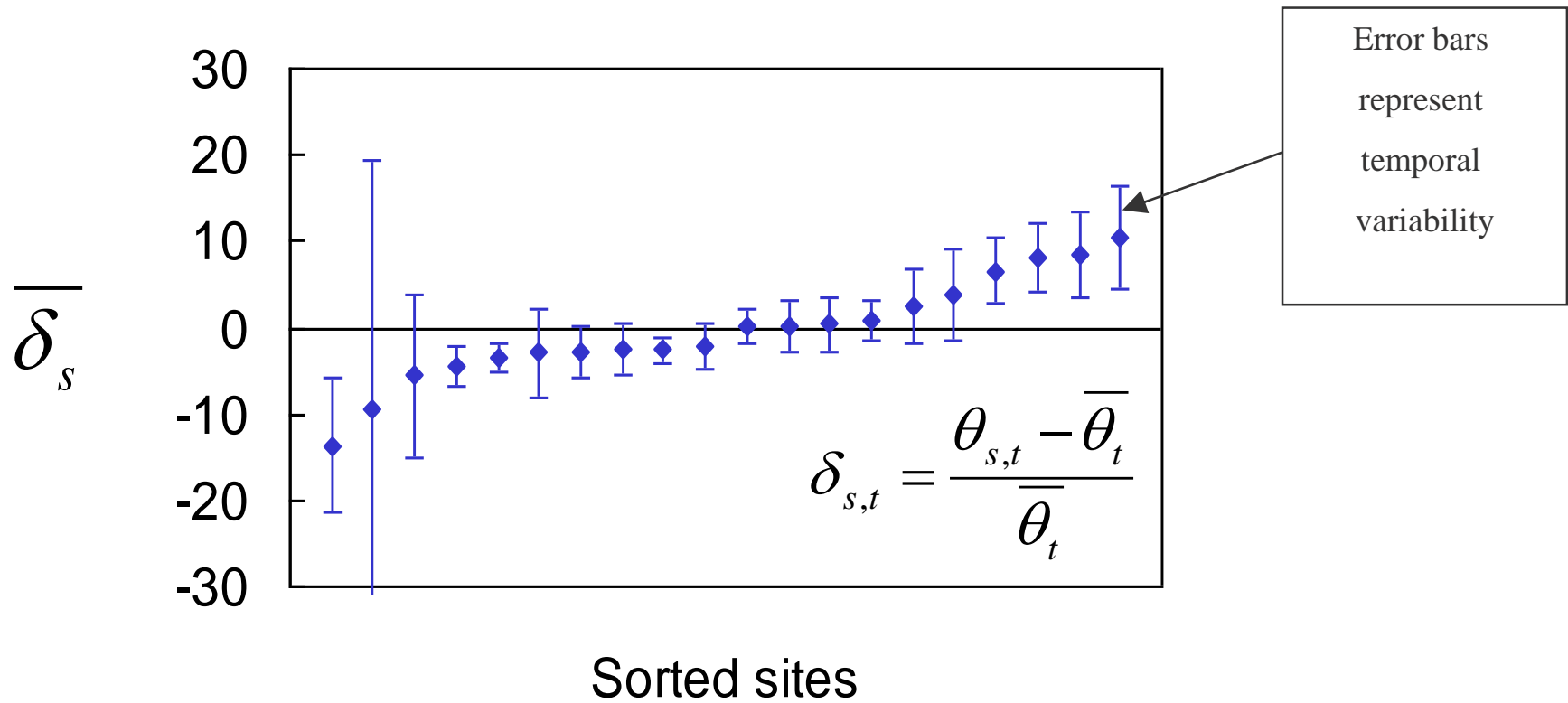
How many stations to monitor?



How to layout stations?



Where do we monitor?

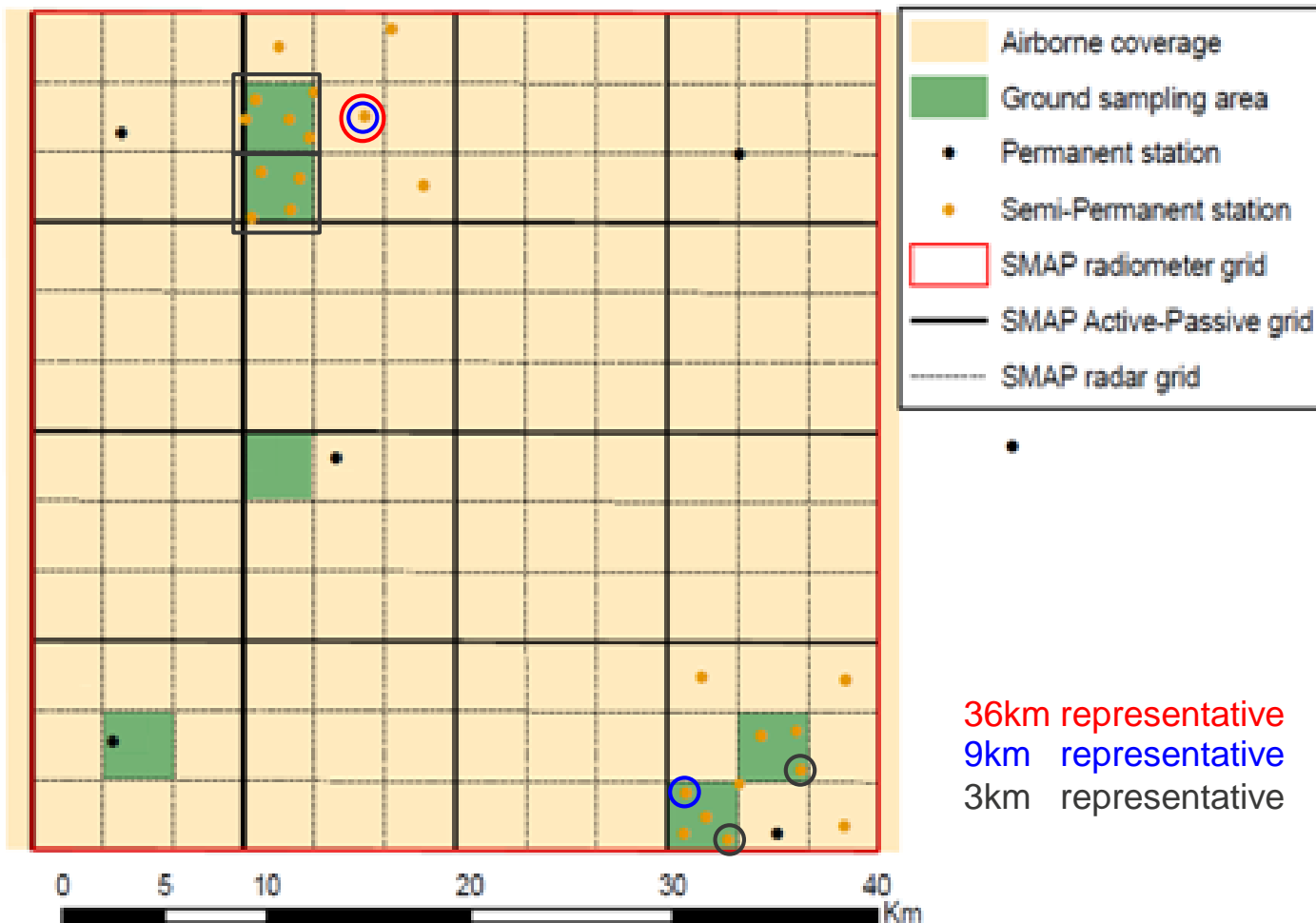


Where do we monitor?

Pixel	Focus Area	MRD	SD	TS (RMSE)	Point to pixel	Recommendations
3 km	YA4	YA4b	YA4c	YA4e	YA4b	Weighting
	YA7	YA7d	YA7e	YA7d	YA7b	Weighting
	YB5	YB5a	YB5a	YB5a	YB5e	YB5e
	YB7	YB7a	YB7b	YB7a	YB7e	YB7e
9 km	YA	YA1 (YA1)	YA7e (YA7e)	YA5 (YA5)	-	YA5
	YB	Y10 (YB7d)	YB7b (YB7a)	YB7a (YB7c)	-	YB7a
36 km	Y	Y7 (YA4c)	YB5d/YB7b (YB5d/YB7b)	YA5 (YB7c)	YB7e, YA5	YA5

Stations in brackets are representative stations when analysis was carried out without eliminating stations from one pixel scale to another.

Representative stations?



How do we monitor?



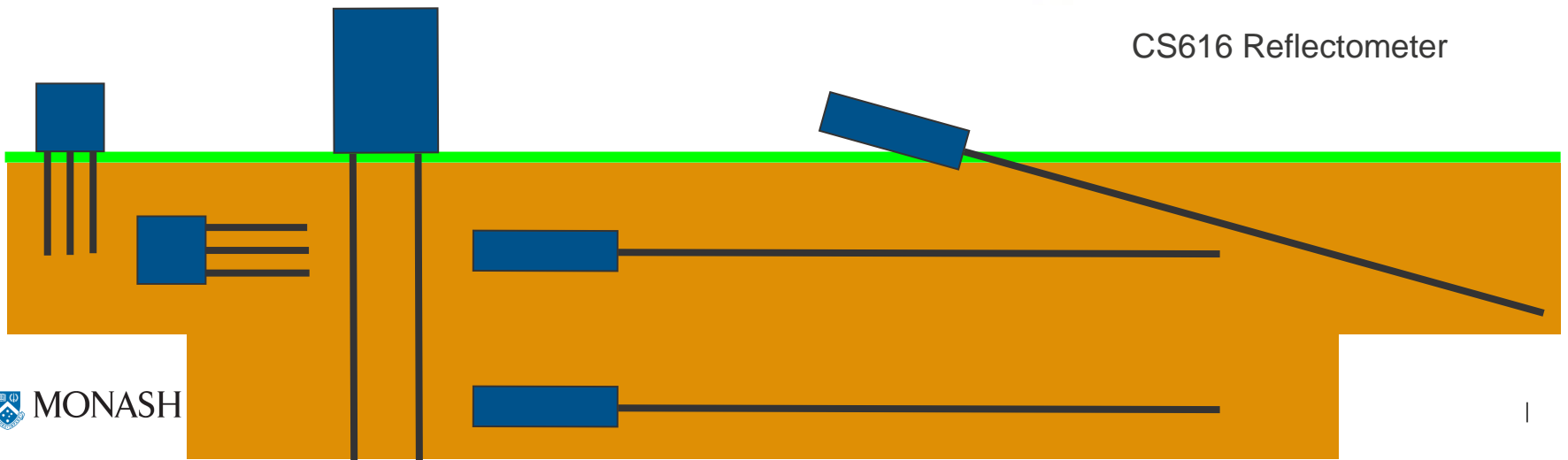
Hydra Probe



Theta Probe

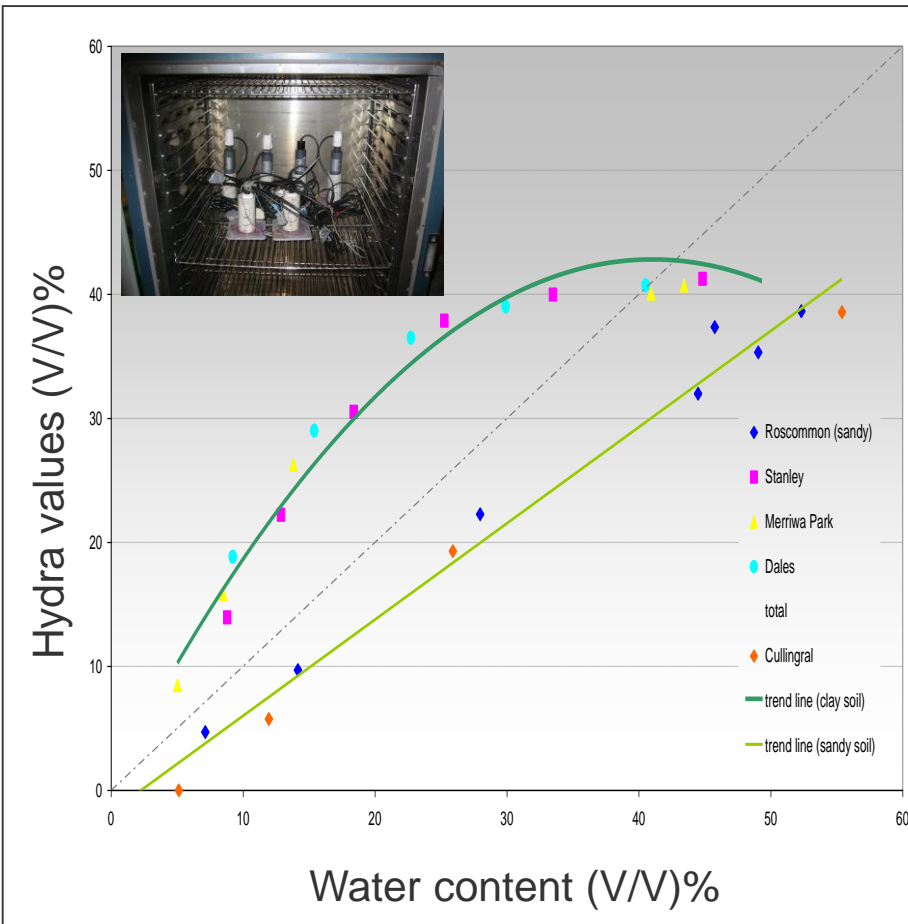


CS616 Reflectometer

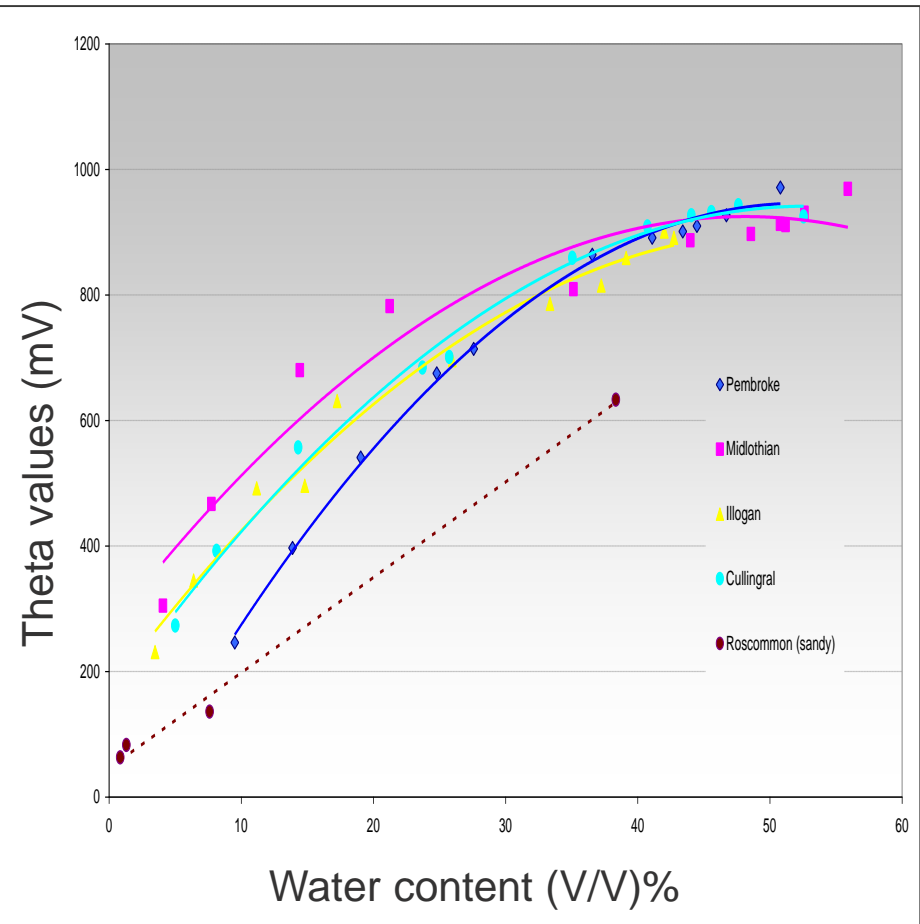


How do we monitor?

Hydra Probe



Theta Probe



What auxiliary data?

- Precipitation at the site
- Other met data locally
- Transects to give information on representativeness of site
- Soil and vegetation properties
- Landscape position