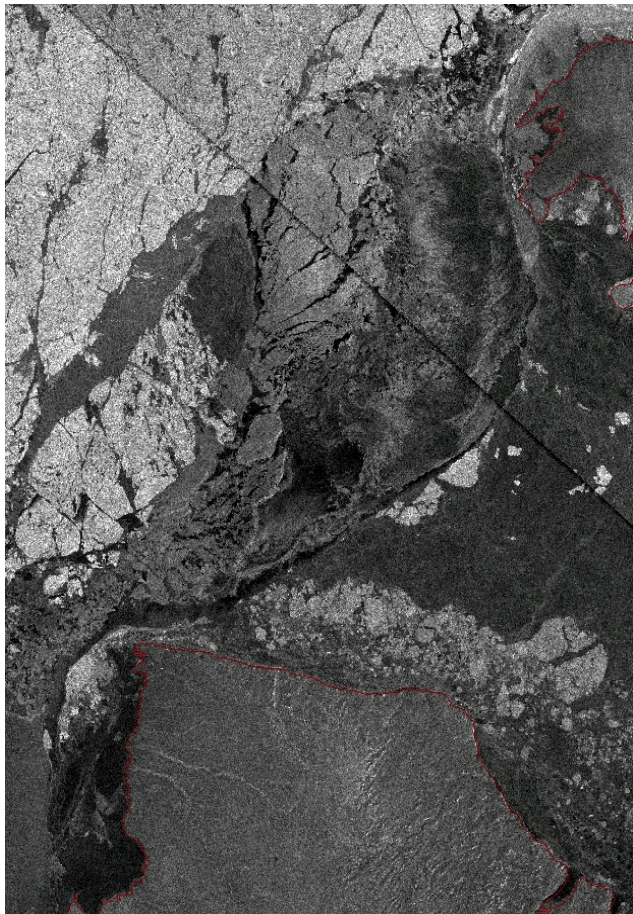


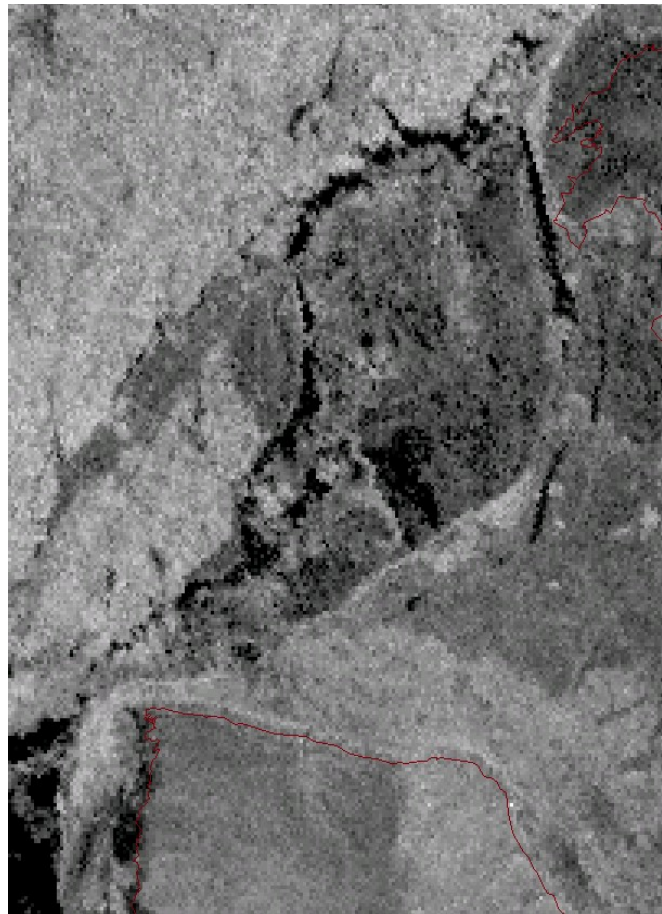


SMAP Radar for Operational Sea Ice Monitoring

Canadian Ice Service, *Matt Arkett*



RADARSAT-2



SMAP

Page 19 – February 27, 2017

**CIS Analysts ask
the question:**

**Does SMAP L-band
provide additional
information about
sea ice formation
to the typical C-
band data stream?**

Answer: Yes.