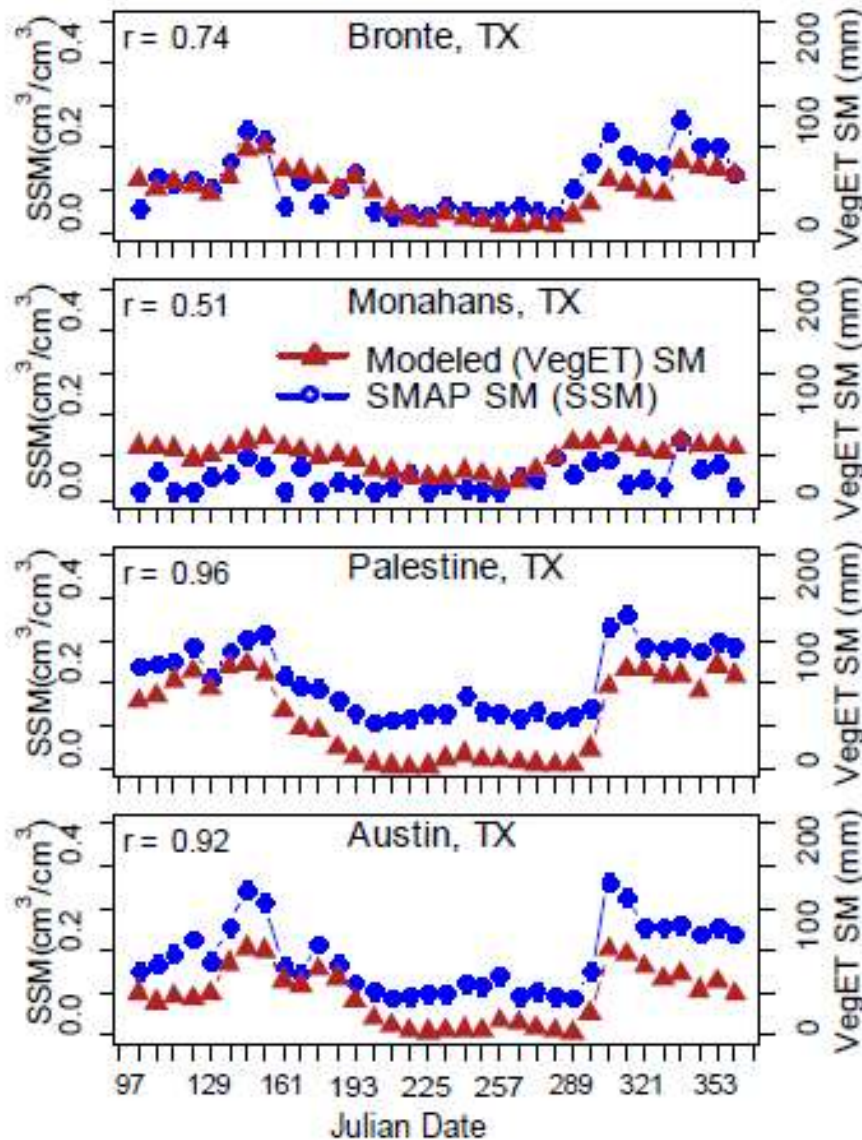




Drought Monitoring

U.S. Geological Survey, Manohar Velpuri, Jeff Morisette



USGS conducts drought monitoring in areas dominated by grasslands and shrublands.

SMAP showed a reliable and expected response of capturing seasonal soil moisture dynamics in relation to precipitation, land surface temperature, and evapotranspiration.

February 27, 2017